

NEWSLETTER

July 2021



What's New?

- 4x4 Wheelchair Bus
- Mining Contract
- Bus 4x4 2WD High Lift
- Bus 4x4 Offroad Blog



BUS4x4





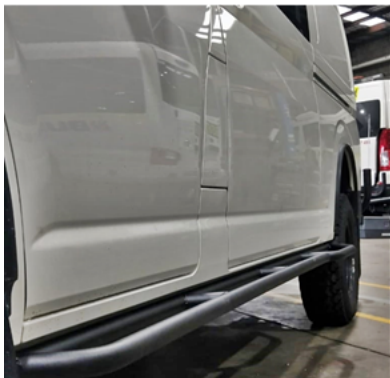
Pictured: Bus 4x4 Conversion of Coaster with Rear Wheelchair Lift

BUS 4x4 GROUP

The first Bus 4x4 Conversion of Coaster fitted with a wheelchair lift at the rear. This 19-seat bus (17 passengers + 1 wheelchair + driver) will be going to a Council in Far North Queensland so they can offer better access to services in outlying areas.

Warm Regards from **The Bus 4x4 Team**

BREAKING NEWS



MINING CONTRACT

Bus 4x4 is pleased to secure a contract of 29 4x4 Conversion of Coasters for a major supplier across various mine sites in the Bowen Basin. All the Coasters will be built with full mine specifications and with the latest safety technology and accessories.

For more details on the **Bus 4x4 Conversion of Coasters**, call us on **07 3276 1420**.

WHAT'S HAPPENING?

CUSTOMER DELIVERY



Congratulations to Daintree Discovery Tours on the Bus 4x4 2WD High Lift Conversion of their 300 Series Hiace Commuter. Bus 4x4 wishes them all the best in their tour operations.

For more details on the **Bus 4x4 High Lift Conversion of Hiace**, call **+61 7 3276 1420**.

4WD EXPOS IN WA

Our WA Distributor **Perth Motor Bodies** is taking part in 2 expos displaying the Bus 4x4 Conversion of Hiace Commuter:

- **Spinifex Spree** in Port Hedland on 23rd & 24th July
- **Fenacng Festival** in Karratha on 31st July & 1st Aug

If you are in Pilbara, visit their stand and say hi to them.



BUS 4x4 OFF-ROAD BLOG

WHEELCHAIR CONVERSION

The first wheelchair conversion of a Bus 4x4 Coaster.

Bus 4x4 was recently asked by a regional council in Far North Queensland to fit a wheelchair lift on a 4x4 converted Coaster. This regional council uses 4x4 vehicles for community transport.

Click [here](#) to read our blog on how we were able to build a brand-new wheelchair 4x4 converted vehicle which will give the community better access to services in outlying areas.



OUTBACK TRAVELS

"What is that?" Hardly a day goes by for Andrew and Mary Massey without hearing it, usually from some hardened 4WD traveller as they slowly give them an approving once over.

These Bus 4x4 customers are drawing plenty of attention as they travel around Outback Queensland in their 4x4 campervan. Read their story as they move from the Big Red Bash Music Festival at Birdsville to the towns of Bedourie, Boulia and Camooweal.



DO YOU HAVE A VEHICLE TO SELL?

Bus 4x4 offers you a hassle-free sale of your vehicle. We use extensive sales tools like our monthly newsletter which reaches over 10,000 subscribers, our high traffic website, social media and classified portals. Take the hassle out of selling your vehicle and email us on enquiries@bus4x4.com.au

DID YOU KNOW ?



Boulia known for the last ill-fated 1860 expedition of Burke and Wills is more popular these days for the "Min Min Lights" and iconic Camel Races. The Min Min Lights is a light refraction luminescence phenomenon but preferably believed by people as Aboriginal mystical spirits.

Boulia is 325 kms south of Mt Isa and 365 kms west of Winton.

NEWS AND VIEWS FROM AROUND



BIG LAP?

With the current lockdown in Australia, more and more people are considering domestic trips with #vanlife getting hugely popular this year. Doing the Big Lap around Australia is on everyone's bucket list, so read how two seasoned travellers are preparing for the trip of a lifetime.

[Click to go to the article on the Escape website.](#)

MINING BOOM

While Covid-19 has flattened or closed many industries, it has an opposite effect on the mining industry. According to Mining Technology, mining in Australia is actually thriving and is a bastion of stability and profitability amid the uncertain times of the pandemic.

[Click to read the article on the Mining Technology website.](#)



BUS 4x4



Bus 4x4 Group includes Bus 4x4 | 4x4 Tour Bus | 4x4 Motorhomes | Bus 4x4 Hire, located at 1828 Ipswich Road, Rocklea, Queensland 4106 Australia. Tel: +61 7 3276 1420

www.bus4x4.com.au